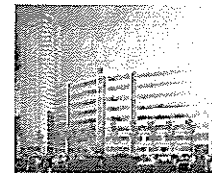


THE MANAGEMENT CORPORATION STRATA TITLE PLAN NO 3564

WCEGA Plaza & Tower Management Office
21 Bukit Batok Crescent #02-71 Singapore 658065
Tel : 65617759/60 Fax : 65626252 Email: enquiry@sgwcega.com



18 February 2019

To: All Occupants of Wcega Plaza & Tower

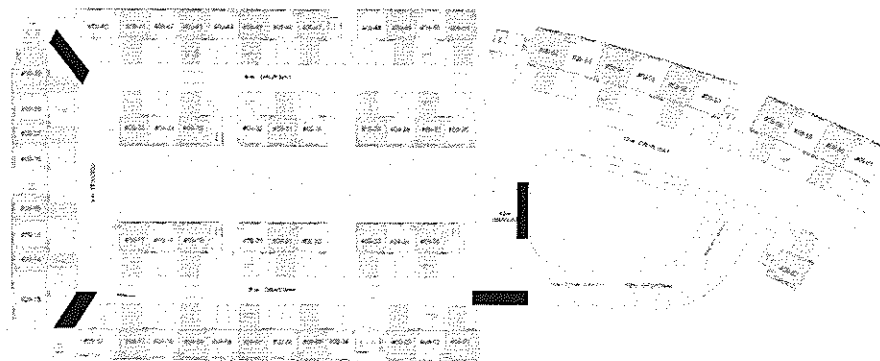
Registration for Container Parking

The Management observed that there is an increase of container movement in the estate. For safety concern of all persons, vehicles and smooth operation of all businesses, we need to manage the movement of these containers in our premise as there is always heavy traffic during office hours at Wcega Plaza.

With effect from **1 March 2019**, occupants have to register at least 3 working days in advance for containers coming into the estate and a parking notice will be issued to be displayed on the container. Containers parked at common area without a permit will be clamped/tow away.

All registered containers are permitted to park for a maximum of 48 hours (2 working days). Further additional hours are subject to payment of \$30.00 per 24 hours (1 day).

For Wcega Plaza - 20 feet containers (**no registration is required**) are to park within the unit's strata red lots and for 40 feet containers (**registration is required**) are to park at the designated area allocated from level 5 to level 9 on a first come first serve basis. Please refer to the picture below.



For Wcega Tower - As there is only 4 loading/unloading bay at level 1, all containers **must register**, failing which the management reserve the rights to reject any container entering the estate on an ad-hoc basis.

Thank you.

Yours truly,

Rayan Lim
Complex Manager
For and on behalf of MCST 3564

Managing Agent: Newman & Goh Property Consultants Pte Ltd

1 Sophia Road #06-13 Peace Centre Singapore 228149
Tel: 62569333 Fax: 62512028 Email: info@newman-goh.com